

LOT 922

SOUTH  
JERRABOMBERRA

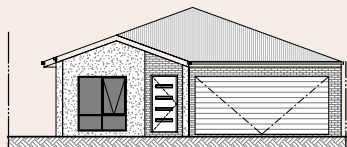
# HOUSE AND LAND PACKAGE

\$829,900

S<sup>TH</sup>  
J



Artists Impression



3      2.5      2

Block Size      405m<sup>2</sup>

House Size      164m<sup>2</sup>

Living\*      127m<sup>2</sup>

Garage      37m<sup>2</sup>

\* Does not include alfresco or porch dimensions

For more information contact:

Vlada Piven

0404 891 155

vpiven@villagebuilding.com.au



LEGEND

- Grass
- ⊕ Trees
- Shrubs
- ▨ Mulch
- Rubbish Bins
- ▭ Driveway
- Water Tank
- ▭ Clothesline
- Concrete



Disclaimer: This flyer and the information contained within it is for information purposes only and does not constitute an offer, inducement, representation, warranty, or contract. Prices are correct at the time of printing and are subject to change. Illustrations, images, artists impressions, plan, statements, figures, calculations, representations are an indicative only and are subject to change. All prospective buyers are advised to carry out their own investigations to satisfy themselves as to all aspects of the development and should seek independent legal and financial advice in relation to all information contained herein. Plans subject to CDC approval. Current as of April 2023.