

**NOTES:**

1. THIS PLAN ONLY INDICATES AREA OF FILL OF WHICH THE DEVELOPER AND ITS AGENTS ARE AWARE. IT HAS NOT BEEN CHECKED BY THE DEVELOPER, AND THE DEVELOPER DOES NOT GUARANTEE ITS ACCURACY. IN NO WAY SHOULD THIS PLAN BE READ AS A CONCLUSIVE STATEMENT OF THE FULL EXTENT OF THE FILL THAT MAY BE FOUND ON THE WHOLE LAND DEPICTED. LESSEES AND PURCHASERS SHOULD MAKE THEIR OWN INQUIRIES IN REGARD TO THE EXACT DRAINAGE, GEOTECHNICAL AND FILL CONDITIONS AFFECTING THEIR BLOCKS.
2. HYDRAULICS, STREET TREES, STREET LIGHTS AND SUBSTATION LOCATIONS ARE INDICATIVE ONLY.
3. LANDSCAPING WITHIN THE INNER PROTECTION AREA MUST COMPLY WITH CLAUSE 3.7 OF THE NSW RURAL FIRE SERVICE PLANNING FOR BUSHFIRE PROTECTION (2018).

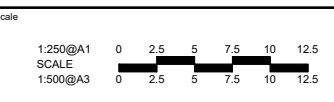
**LEGEND**

- STAGE 1D BOUNDARY: Yellow dashed line
- FINISHED SURFACE CONTOURS (1m): Grey line with '590'
- FILL: Green shaded area
- FILL DEPTH (to nearest 100mm): x 0.5
- STREETLIGHT: Orange star symbol
- STREET TREE: Green circle with star
- DRIVEWAY LOCATION: Brown rectangle
- SUBSTATION (ELECTRICAL): Square with 'S'
- BLOCK AREA / BOUNDARY LENGTH: 400m² 4.54
- 62i 3.5m COMBINED EASEMENT (Sewer and Stormwater): Dashed line
- 404 PATH (1.2 - 2.5m wide): Dashed line
- BUSHFIRE ATTACK LEVEL: BAL 12.5
- INNER PROTECTION AREA AFFECTED BLOCK (refer note 3): Red circle with 'IPA'
- BLOCK DP NUMBER: 802
- STORMWATER, SEWER, WATER TIES: Red, green, and blue lines



file name: 306356CS037.dwg  
 file location: G:\306356\306356\CAD\Superlots\_Sales\_Plans\plot\_date\_23/06/2023\_8:38 AM\_Sheet\_12\_of\_28\_Sheets

Rev	Description	Approved	Date
F	LEGEND UPDATED	BC	08-04-21
E	HYDRAULIC SERVICES ADDED	BC	06-04-21
D	BLOCK LETTERS REMOVED	BC	18-03-21
C	CLIENT COMMENTS ADDRESSED	BC	18-03-21
B	CONTOUR LABELS UPDATED	BC	15-03-21
A	FIRST ISSUE	BC	28-01-21
Rev	Amendments	Approved	Date



© Spiire Australia Pty Ltd All Rights Reserved  
 This document is produced by Spiire Australia Pty Ltd solely for the benefit of and use by the client in accordance with the terms of the retainer. Spiire Australia Pty Ltd does not and shall not assume any responsibility or liability whatsoever to any third party arising out of any use or reliance by third party on the contents of this document.



Lvl 1, 243 Northbourne Ave Lyneham  
 Australian Capital Territory Australia T 61 2 6102 1000  
 spiire.com.au ABN 55 050 029 635

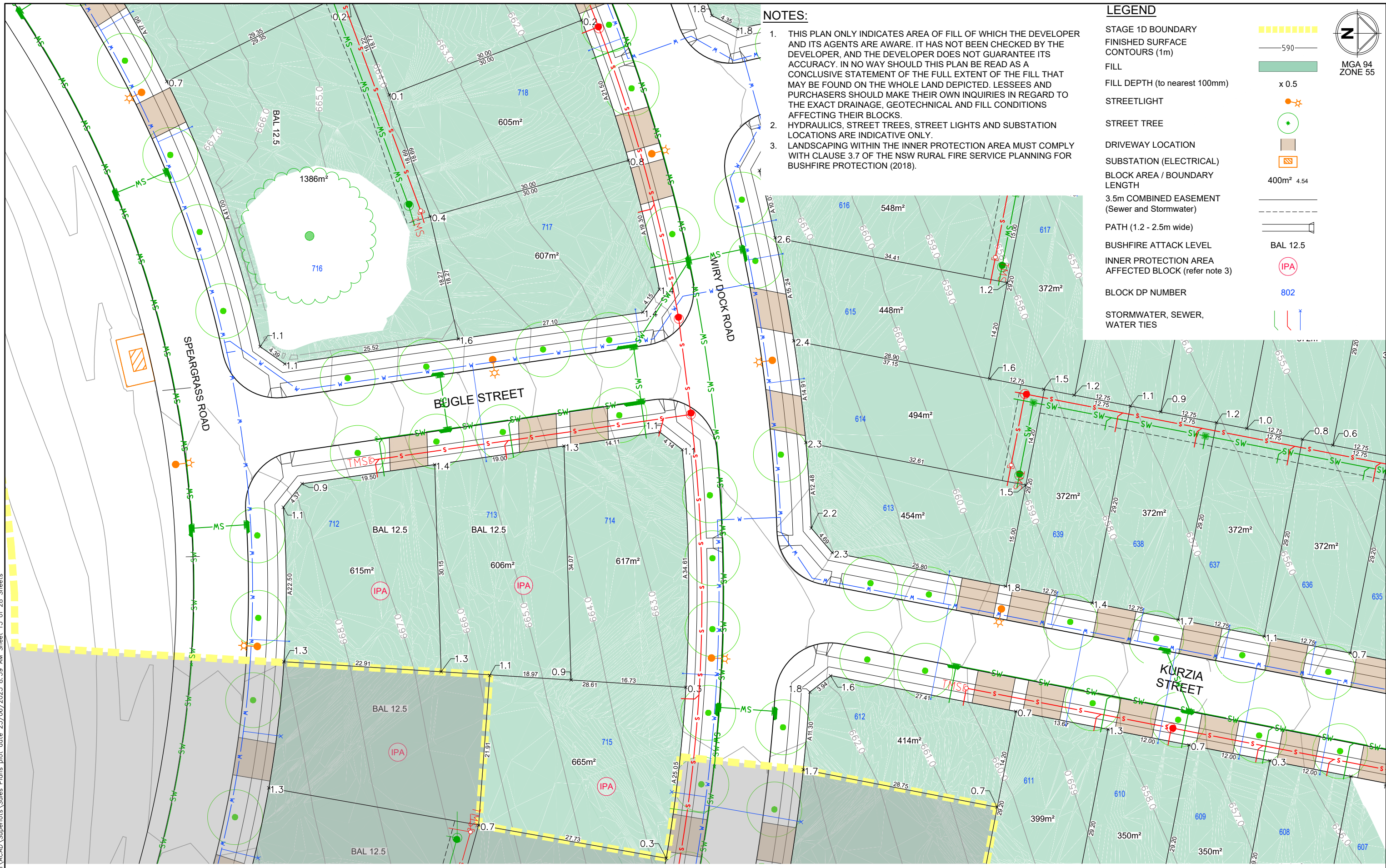


Designed: \_\_\_\_\_  
 Authorised: \_\_\_\_\_  
 Checked: \_\_\_\_\_  
 Date: \_\_\_\_\_

**SOUTH JERRABOMBERRA SALES PLAN**  
 STAGE 1D  
 SHEET 37 - SECTION AU & AV  
 QPRC  
 VILLAGE BUILDING COMPANY

Dwg No: **306356CS037** Rev: **F**

file name: 306356CS038.dwg  
 layout name: CS038  
 plotted by: Tom Willburger  
 file location: G:\306356\ACAD\Superlots\Sales Plans\plot\_date\_23/06/2023 8:39 AM Sheet 13 of 28 Sheets



**NOTES:**

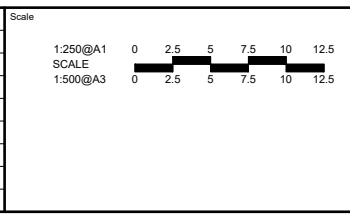
1. THIS PLAN ONLY INDICATES AREA OF FILL OF WHICH THE DEVELOPER AND ITS AGENTS ARE AWARE. IT HAS NOT BEEN CHECKED BY THE DEVELOPER, AND THE DEVELOPER DOES NOT GUARANTEE ITS ACCURACY. IN NO WAY SHOULD THIS PLAN BE READ AS A CONCLUSIVE STATEMENT OF THE FULL EXTENT OF THE FILL THAT MAY BE FOUND ON THE WHOLE LAND DEPICTED. LESSEES AND PURCHASERS SHOULD MAKE THEIR OWN INQUIRIES IN REGARD TO THE EXACT DRAINAGE, GEOTECHNICAL AND FILL CONDITIONS AFFECTING THEIR BLOCKS.
2. HYDRAULICS, STREET TREES, STREET LIGHTS AND SUBSTATION LOCATIONS ARE INDICATIVE ONLY.
3. LANDSCAPING WITHIN THE INNER PROTECTION AREA MUST COMPLY WITH CLAUSE 3.7 OF THE NSW RURAL FIRE SERVICE PLANNING FOR BUSHFIRE PROTECTION (2018).

**LEGEND**

- STAGE 1D BOUNDARY: Yellow dashed line
- FINISHED SURFACE CONTOURS (1m): Grey line with '590'
- FILL: Green shaded area
- FILL DEPTH (to nearest 100mm): 'x 0.5'
- STREETLIGHT: Orange star symbol
- STREET TREE: Green circle with star
- DRIVEWAY LOCATION: Brown rectangle
- SUBSTATION (ELECTRICAL): Orange square with 'S'
- BLOCK AREA / BOUNDARY LENGTH: '400m² 4.54'
- 3.5m COMBINED EASEMENT (Sewer and Stormwater): Dashed line
- PATH (1.2 - 2.5m wide): Double line
- BUSHFIRE ATTACK LEVEL: 'BAL 12.5'
- INNER PROTECTION AREA AFFECTED BLOCK (refer note 3): Red circle with 'IPA'
- BLOCK DP NUMBER: '802'
- STORMWATER, SEWER, WATER TIES: Lines with 'S', 'SW', 'W' labels



Rev	Amendments	Approved	Date
A	FIRST ISSUE	BC	28-01-21
B	CONTOUR LABELS UPDATED	BC	15-03-21
C	CLIENT COMMENTS ADDRESSED	BC	18-03-21
D	BLOCK LETTERS REMOVED	BC	18-03-21
E	HYDRAULIC SERVICES ADDED	BC	06-04-21
F	LEGEND UPDATED	BC	08-04-21
G	LOT 716 NUMBER UPDATED	TW	23-06-23



**spiire**

Lvl 1, 243 Northbourne Ave Lyneham  
 Australian Capital Territory Australia T 61 2 6102 1000  
 spiire.com.au ABN 55 050 029 635

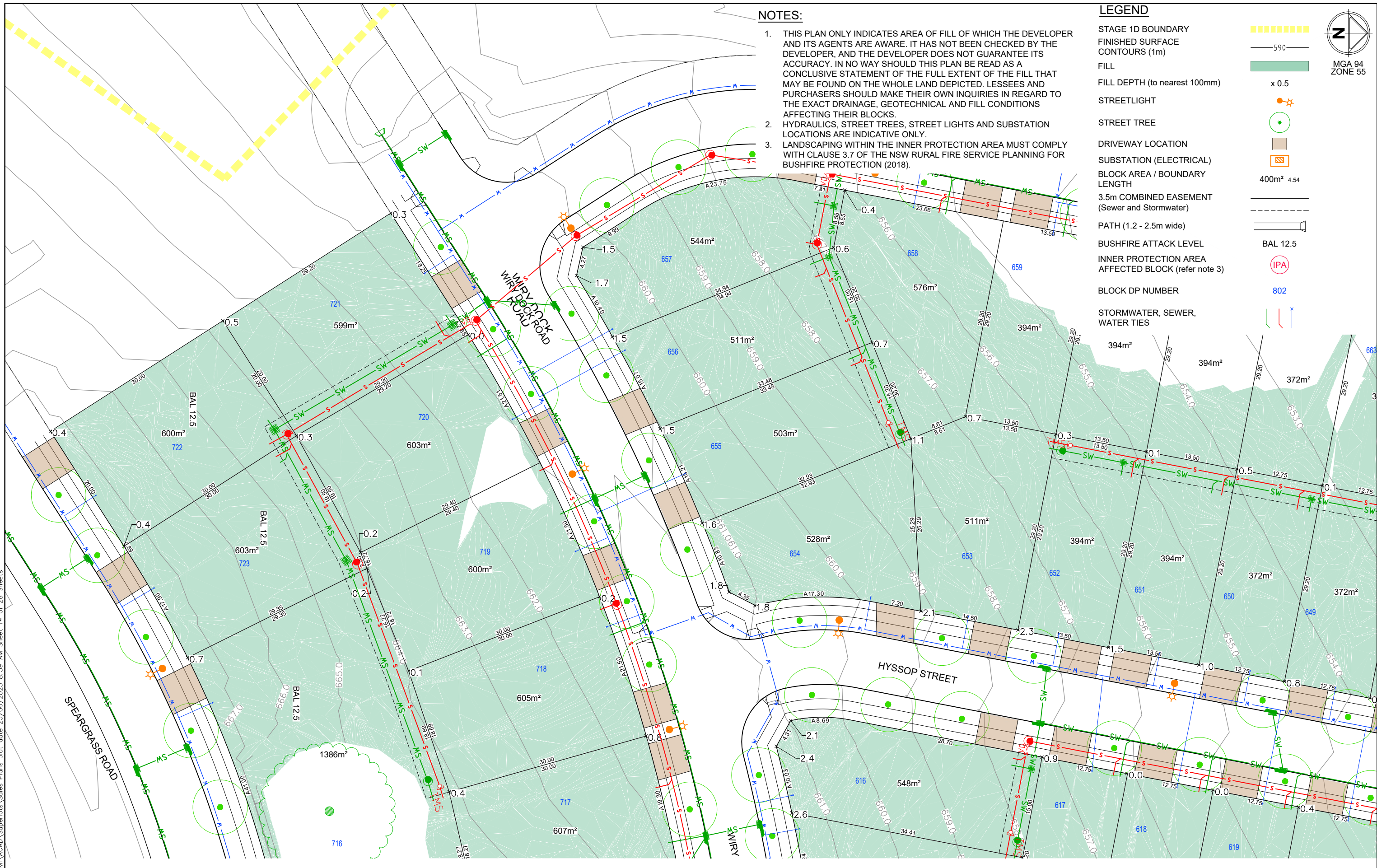
**Village**

Designed: \_\_\_\_\_ Checked: \_\_\_\_\_  
 Authorised: \_\_\_\_\_ Date: \_\_\_\_\_

**SOUTH JERRABOMBERRA SALES PLAN**  
 STAGE 1D  
 SHEET 38 - SECTION BB & BC & AV & AU  
 QPRC  
 VILLAGE BUILDING COMPANY

Dwg No: **306356CS038** Rev: **G**

file name: 306356CS039.dwg  
 layout name: CS039  
 plotted by: Tom Willburger  
 file location: G:\306356\ACAD\Superlots Sales Plans plot date: 23/06/2023 8:39 AM Sheet 14 of 28 Sheets



**NOTES:**

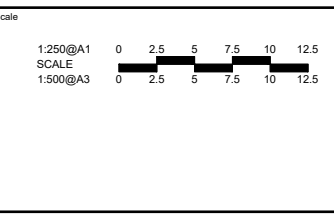
1. THIS PLAN ONLY INDICATES AREA OF FILL OF WHICH THE DEVELOPER AND ITS AGENTS ARE AWARE. IT HAS NOT BEEN CHECKED BY THE DEVELOPER, AND THE DEVELOPER DOES NOT GUARANTEE ITS ACCURACY. IN NO WAY SHOULD THIS PLAN BE READ AS A CONCLUSIVE STATEMENT OF THE FULL EXTENT OF THE FILL THAT MAY BE FOUND ON THE WHOLE LAND DEPICTED. LESSEES AND PURCHASERS SHOULD MAKE THEIR OWN INQUIRIES IN REGARD TO THE EXACT DRAINAGE, GEOTECHNICAL AND FILL CONDITIONS AFFECTING THEIR BLOCKS.
2. HYDRAULICS, STREET TREES, STREET LIGHTS AND SUBSTATION LOCATIONS ARE INDICATIVE ONLY.
3. LANDSCAPING WITHIN THE INNER PROTECTION AREA MUST COMPLY WITH CLAUSE 3.7 OF THE NSW RURAL FIRE SERVICE PLANNING FOR BUSHFIRE PROTECTION (2018).

**LEGEND**

- STAGE 1D BOUNDARY: Yellow dashed line
- FINISHED SURFACE CONTOURS (1m): Grey line with '590'
- FILL: Green shaded area
- FILL DEPTH (to nearest 100mm): x 0.5
- STREETLIGHT: Orange star symbol
- STREET TREE: Green circle with star
- DRIVEWAY LOCATION: Brown rectangle
- SUBSTATION (ELECTRICAL): Orange square with 'S'
- BLOCK AREA / BOUNDARY LENGTH: 400m² 4.54
- 3.5m COMBINED EASEMENT (Sewer and Stormwater): Dashed line
- PATH (1.2 - 2.5m wide): Double line
- BUSHFIRE ATTACK LEVEL: BAL 12.5
- INNER PROTECTION AREA AFFECTED BLOCK (refer note 3): Red circle with 'IPA'
- BLOCK DP NUMBER: 802
- STORMWATER, SEWER, WATER TIES: Green, red, and blue lines



Rev	Amendments	Approved	Date
F	LEGEND UPDATED	BC	08-04-21
E	HYDRAULIC SERVICES ADDED	BC	06-04-21
D	BLOCK LETTERS REMOVED	BC	18-03-21
C	CLIENT COMMENTS ADDRESSED	BC	18-03-21
B	CONTOUR LABELS UPDATED	BC	15-03-21
A	FIRST ISSUE	BC	28-01-21



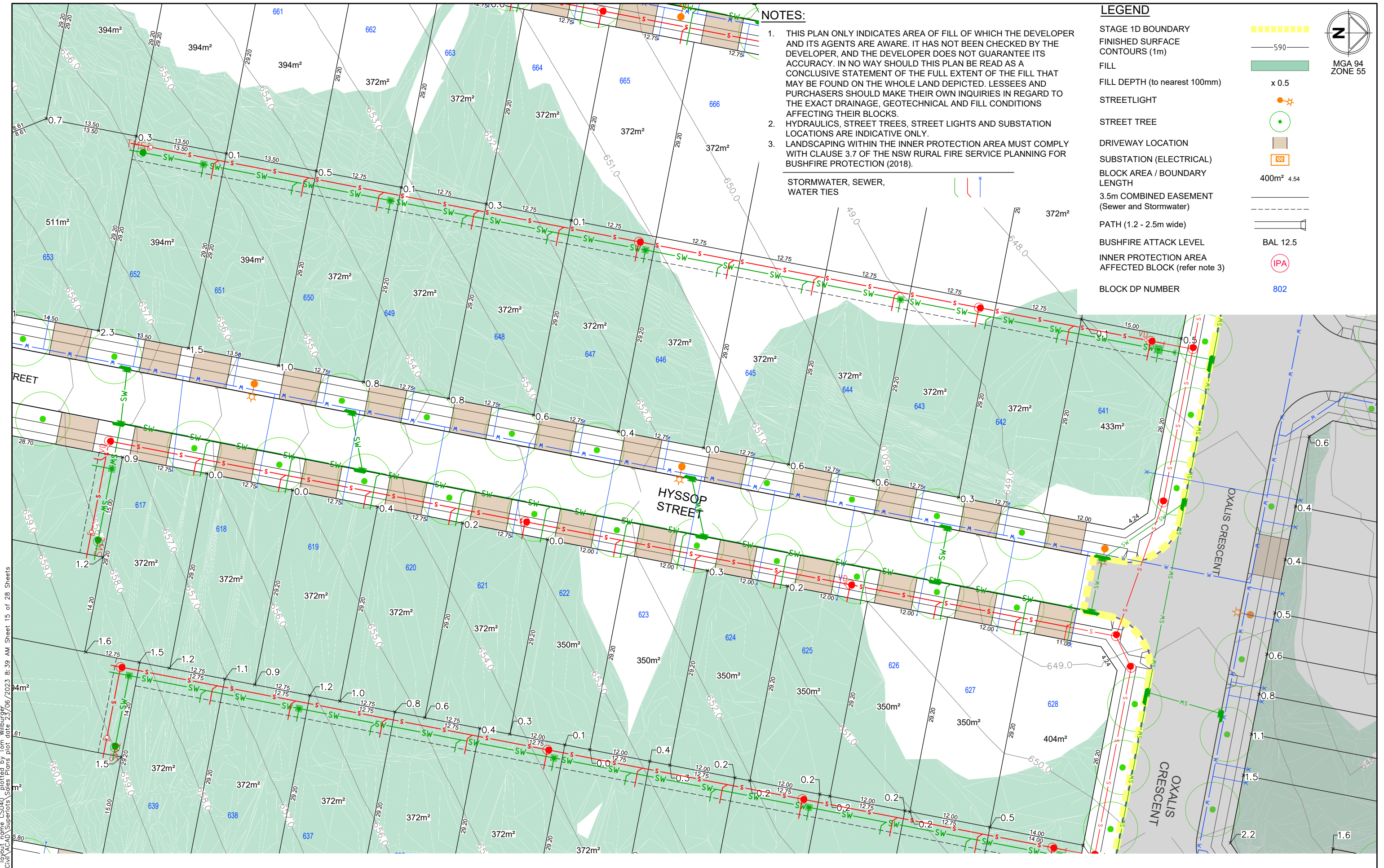
© Spiire Australia Pty Ltd All Rights Reserved  
 This document is produced by Spiire Australia Pty Ltd solely for the benefit of and use by the client in accordance with the terms of the retainer. Spiire Australia Pty Ltd does not and shall not assume any responsibility or liability whatsoever to any third party arising out of any use or reliance by third party on the contents of this document.

Lvl 1, 243 Northbourne Ave Lyneham  
 Australian Capital Territory Australia T 61 2 6102 1000  
 spiire.com.au ABN 55 050 029 635

Designed: \_\_\_\_\_ Checked: \_\_\_\_\_  
 Authorised: \_\_\_\_\_ Date: \_\_\_\_\_

**SOUTH JERRABOMBERRA SALES PLAN**  
 STAGE 1D  
 SHEET 39 - SECTION BB & AW  
 QPRC  
 VILLAGE BUILDING COMPANY

Dwg No: **306356CS039** Rev: **F**



**NOTES:**

1. THIS PLAN ONLY INDICATES AREA OF FILL OF WHICH THE DEVELOPER AND ITS AGENTS ARE AWARE. IT HAS NOT BEEN CHECKED BY THE DEVELOPER, AND THE DEVELOPER DOES NOT GUARANTEE ITS ACCURACY. IN NO WAY SHOULD THIS PLAN BE READ AS A CONCLUSIVE STATEMENT OF THE FULL EXTENT OF THE FILL THAT MAY BE FOUND ON THE WHOLE LAND DEPICTED. LESSEES AND PURCHASERS SHOULD MAKE THEIR OWN INQUIRIES IN REGARD TO THE EXACT DRAINAGE, GEOTECHNICAL AND FILL CONDITIONS AFFECTING THEIR BLOCKS.
2. HYDRAULICS, STREET TREES, STREET LIGHTS AND SUBSTATION LOCATIONS ARE INDICATIVE ONLY.
3. LANDSCAPING WITHIN THE INNER PROTECTION AREA MUST COMPLY WITH CLAUSE 3.7 OF THE NSW RURAL FIRE SERVICE PLANNING FOR BUSHFIRE PROTECTION (2018).

STORMWATER, SEWER, WATER TIES

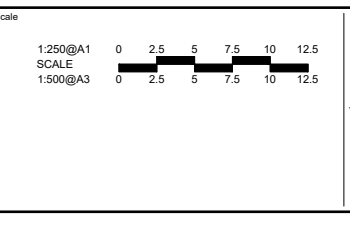
**LEGEND**

- STAGE 1D BOUNDARY
- FINISHED SURFACE CONTOURS (1m)
- FILL
- FILL DEPTH (to nearest 100mm)
- STREETLIGHT
- STREET TREE
- DRIVEWAY LOCATION
- SUBSTATION (ELECTRICAL)
- BLOCK AREA / BOUNDARY LENGTH
- 3.5m COMBINED EASEMENT (Sewer and Stormwater)
- PATH (1.2 - 2.5m wide)
- BUSHFIRE ATTACK LEVEL
- INNER PROTECTION AREA
- AFFECTED BLOCK (refer note 3)
- BLOCK DP NUMBER



file name: 306356CS040.dwg, layout name: CS040, plotted by: Tom Willburger, file location: G:\306356\CAD\Superplots\Sales Plans\plot\_date\_23/06/2023\_8:39 AM Sheet 15 of 28 Sheets

Rev	Amendments	Approved	Date
A	FIRST ISSUE	BC	28-01-21
B	CONTOUR LABELS UPDATED	BC	15-03-21
C	CLIENT COMMENTS ADDRESSED	BC	18-03-21
D	BLOCK LETTERS REMOVED	BC	18-03-21
E	HYDRAULIC SERVICES ADDED	BC	06-04-21
F	LEGEND UPDATED	BC	08-04-21



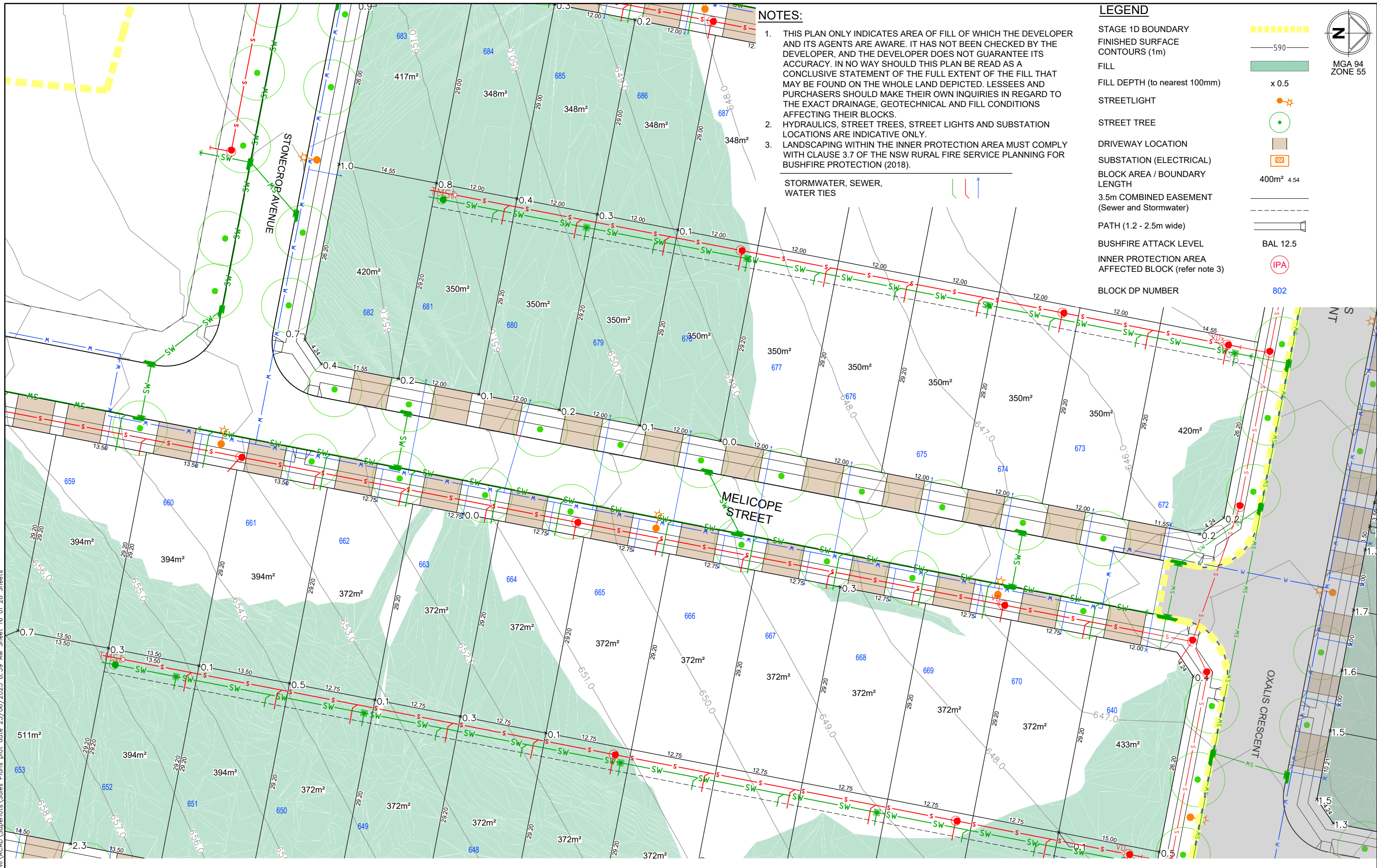
© Spiire Australia Pty Ltd All Rights Reserved  
This document is produced by Spiire Australia Pty Ltd solely for the benefit of and use by the client in accordance with the terms of the retainer. Spiire Australia Pty Ltd does not and shall not assume any responsibility or liability whatsoever to any third party arising out of any use or reliance by third party on the contents of this document.

Lvl 1, 243 Northbourne Ave Lyneham  
Australian Capital Territory Australia T 61 2 6102 1000  
spiire.com.au ABN 55 050 029 635

Designed: \_\_\_\_\_ Checked: \_\_\_\_\_  
Authorised: \_\_\_\_\_ Date: \_\_\_\_\_

**SOUTH JERRABOMBERRA SALES PLAN**  
STAGE 1D  
SHEET 40 - SECTION AV & AW  
QPRC  
VILLAGE BUILDING COMPANY

Dwg No: **306356CS040** Rev: **F**



**NOTES:**

1. THIS PLAN ONLY INDICATES AREA OF FILL OF WHICH THE DEVELOPER AND ITS AGENTS ARE AWARE. IT HAS NOT BEEN CHECKED BY THE DEVELOPER, AND THE DEVELOPER DOES NOT GUARANTEE ITS ACCURACY. IN NO WAY SHOULD THIS PLAN BE READ AS A CONCLUSIVE STATEMENT OF THE FULL EXTENT OF THE FILL THAT MAY BE FOUND ON THE WHOLE LAND DEPICTED. LESSEES AND PURCHASERS SHOULD MAKE THEIR OWN INQUIRIES IN REGARD TO THE EXACT DRAINAGE, GEOTECHNICAL AND FILL CONDITIONS AFFECTING THEIR BLOCKS.
2. HYDRAULICS, STREET TREES, STREET LIGHTS AND SUBSTATION LOCATIONS ARE INDICATIVE ONLY.
3. LANDSCAPING WITHIN THE INNER PROTECTION AREA MUST COMPLY WITH CLAUSE 3.7 OF THE NSW RURAL FIRE SERVICE PLANNING FOR BUSHFIRE PROTECTION (2018).

STORMWATER, SEWER, WATER TIES

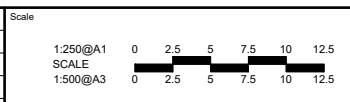
**LEGEND**

- STAGE 1D BOUNDARY
- FINISHED SURFACE CONTOURS (1m)
- FILL
- FILL DEPTH (to nearest 100mm)
- STREETLIGHT
- STREET TREE
- DRIVEWAY LOCATION
- SUBSTATION (ELECTRICAL)
- BLOCK AREA / BOUNDARY LENGTH
- 3.5m COMBINED EASEMENT (Sewer and Stormwater)
- PATH (1.2 - 2.5m wide)
- BUSHFIRE ATTACK LEVEL
- INNER PROTECTION AREA AFFECTED BLOCK (refer note 3)
- BLOCK DP NUMBER



file name: 306356CS041.dwg  
 layout name: CS041  
 plotted by: Tom Wilburger  
 file location: G:\306356\CAD\Superlots\_Sales Plans\plot\_date\_23/06/2023\_8:39 AM Sheet 16 of 28 Sheets

Rev	Amendments	Approved	Date
F	LEGEND UPDATED	BC	08-04-21
E	HYDRAULIC SERVICES ADDED	BC	06-04-21
D	BLOCK LETTERS REMOVED	BC	18-03-21
C	CLIENT COMMENTS ADDRESSED	BC	18-03-21
B	CONTOUR LABELS UPDATED	BC	15-03-21
A	FIRST ISSUE	BC	28-01-21



© Spiire Australia Pty Ltd All Rights Reserved  
 This document is produced by Spiire Australia Pty Ltd solely for the benefit of and use by the client in accordance with the terms of the retainer. Spiire Australia Pty Ltd does not and shall not assume any responsibility or liability whatsoever to any third party arising out of any use or reliance by third party on the contents of this document.



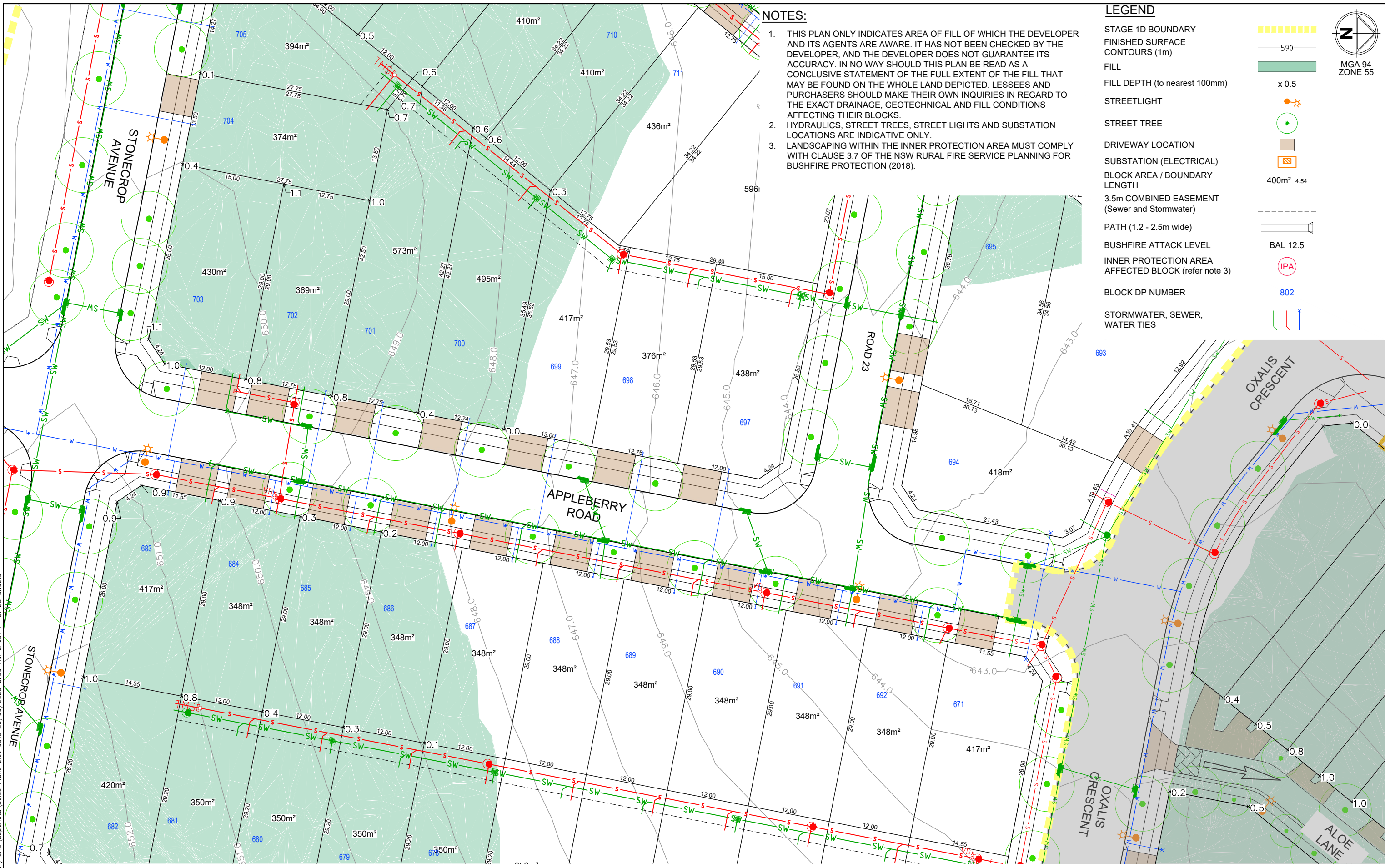
Lvl 1, 243 Northbourne Ave Lyneham  
 Australian Capital Territory Australia T 61 2 6102 1000  
 spiire.com.au ABN 55 050 029 635



Designed \_\_\_\_\_ Checked \_\_\_\_\_  
 Authorised \_\_\_\_\_ Date \_\_\_\_\_

**SOUTH JERRABOMBERRA SALES PLAN**  
 STAGE 1D  
 SHEET 41 - SECTION AW & AX  
 QPRC  
 VILLAGE BUILDING COMPANY

Drg No: **306356CS041** Rev: **F**



**NOTES:**

1. THIS PLAN ONLY INDICATES AREA OF FILL OF WHICH THE DEVELOPER AND ITS AGENTS ARE AWARE. IT HAS NOT BEEN CHECKED BY THE DEVELOPER, AND THE DEVELOPER DOES NOT GUARANTEE ITS ACCURACY. IN NO WAY SHOULD THIS PLAN BE READ AS A CONCLUSIVE STATEMENT OF THE FULL EXTENT OF THE FILL THAT MAY BE FOUND ON THE WHOLE LAND DEPICTED. LESSEES AND PURCHASERS SHOULD MAKE THEIR OWN INQUIRIES IN REGARD TO THE EXACT DRAINAGE, GEOTECHNICAL AND FILL CONDITIONS AFFECTING THEIR BLOCKS.
2. HYDRAULICS, STREET TREES, STREET LIGHTS AND SUBSTATION LOCATIONS ARE INDICATIVE ONLY.
3. LANDSCAPING WITHIN THE INNER PROTECTION AREA MUST COMPLY WITH CLAUSE 3.7 OF THE NSW RURAL FIRE SERVICE PLANNING FOR BUSHFIRE PROTECTION (2018).

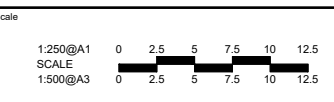
**LEGEND**

- STAGE 1D BOUNDARY
- FINISHED SURFACE CONTOURS (1m)
- FILL
- FILL DEPTH (to nearest 100mm)
- STREETLIGHT
- STREET TREE
- DRIVEWAY LOCATION
- SUBSTATION (ELECTRICAL)
- BLOCK AREA / BOUNDARY LENGTH
- 3.5m COMBINED EASEMENT (Sewer and Stormwater)
- PATH (1.2 - 2.5m wide)
- BUSHFIRE ATTACK LEVEL
- INNER PROTECTION AREA AFFECTED BLOCK (refer note 3)
- BLOCK DP NUMBER
- STORMWATER, SEWER, WATER TIES



file name: 306356CS042.dwg  
 layout name: CS042  
 plotted by: Tom Willburger  
 file location: G:\306356\ACAD\Superlots\_Sales\_Plans\plot\_date\_23/06/2023 8:39 AM Sheet 17 of 28 Sheets  
 file location: G:\306356\ACAD\Superlots\_Sales\_Plans\plot\_date\_23/06/2023 8:39 AM Sheet 17 of 28 Sheets

Rev	Amendments	Approved	Date
A	FIRST ISSUE	BC	28-01-21
B	CONTOUR LABELS UPDATED	BC	15-03-21
C	CLIENT COMMENTS ADDRESSED	BC	18-03-21
D	BLOCK LETTERS REMOVED	BC	18-03-21
E	HYDRAULIC SERVICES ADDED	BC	06-04-21
F	LEGEND UPDATED	BC	08-04-21



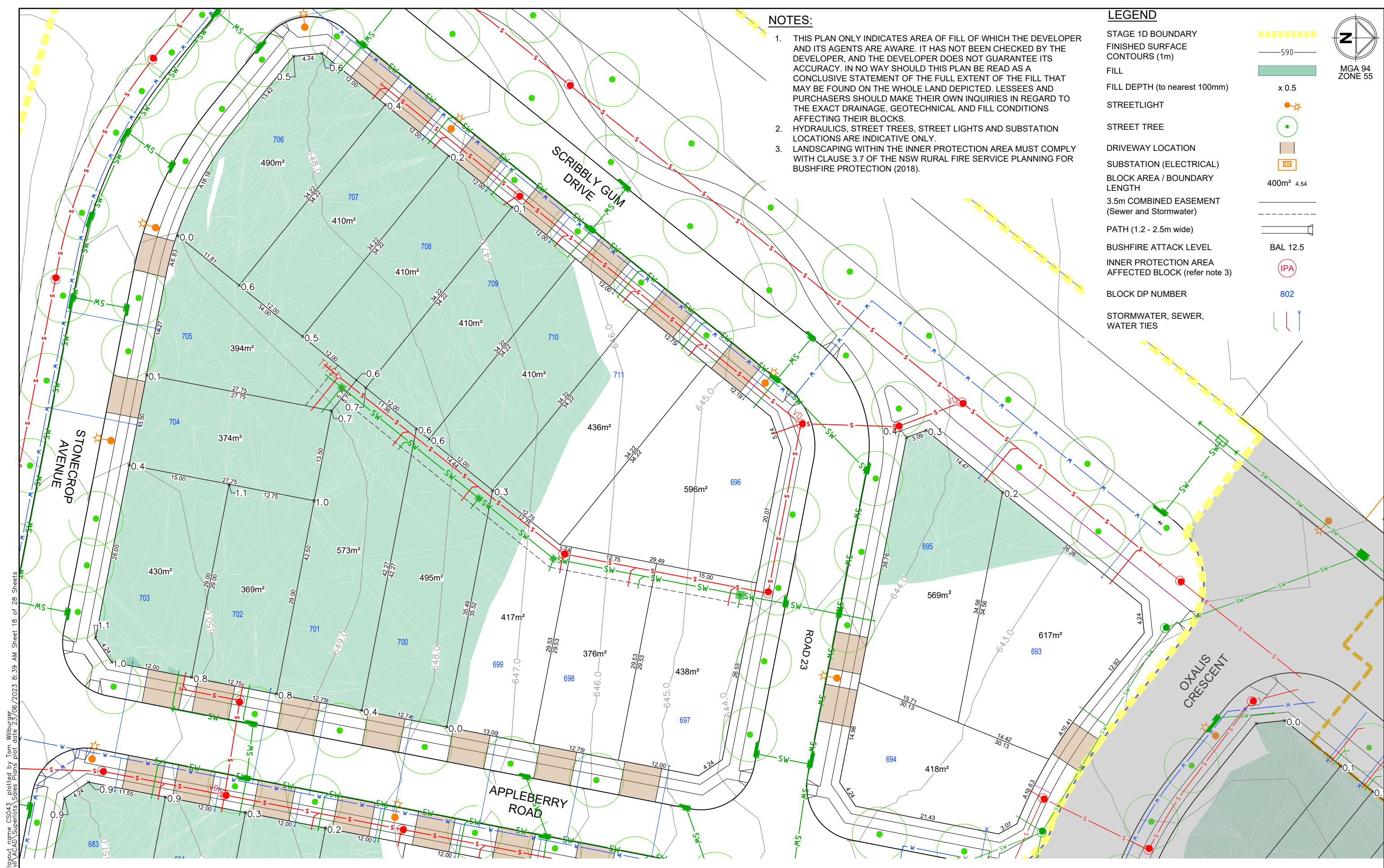
© Spiire Australia Pty Ltd All Rights Reserved  
 This document is produced by Spiire Australia Pty Ltd solely for the benefit of and use by the client in accordance with the terms of the retainer. Spiire Australia Pty Ltd does not and shall not assume any responsibility or liability whatsoever to any third party arising out of any use or reliance by third party on the contents of this document.

Lvl 1, 243 Northbourne Ave Lyneham  
 Australian Capital Territory Australia T 61 2 6102 1000  
 spiire.com.au ABN 55 050 029 635

Designed: \_\_\_\_\_ Checked: \_\_\_\_\_  
 Authorised: \_\_\_\_\_ Date: \_\_\_\_\_

**SOUTH JERRABOMBERRA SALES PLAN**  
 STAGE 1D  
 SHEET 42 - AX AYA AYB  
 QPRC  
 VILLAGE BUILDING COMPANY

Dwg No: **306356CS042** Rev: **F**



**NOTES:**

1. THIS PLAN ONLY INDICATES AREA OF FILL OF WHICH THE DEVELOPER AND ITS AGENTS ARE AWARE. IT HAS NOT BEEN CHECKED BY THE DEVELOPER, AND THE DEVELOPER DOES NOT GUARANTEE ITS ACCURACY. IN NO WAY SHOULD THIS PLAN BE READ AS A CONCLUSIVE STATEMENT OF THE FULL EXTENT OF THE FILL THAT MAY BE FOUND ON THE WHOLE LAND DEPICTED. LESSEES AND PURCHASERS SHOULD MAKE THEIR OWN INQUIRIES IN REGARD TO THE EXACT DRAINAGE, GEOTECHNICAL AND FILL CONDITIONS AFFECTING THEIR BLOCKS.
2. HYDRAULICS, STREET TREES, STREET LIGHTS AND SUBSTATION LOCATIONS ARE INDICATIVE ONLY.
3. LANDSCAPING WITHIN THE INNER PROTECTION AREA MUST COMPLY WITH CLAUSE 3.7 OF THE NSW RURAL FIRE SERVICE PLANNING FOR BUSHFIRE PROTECTION (2018).

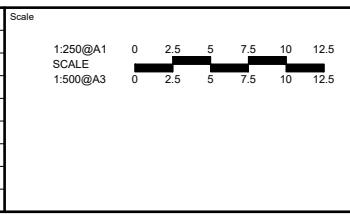
**LEGEND**

- STAGE 1D BOUNDARY: Yellow dashed line
- FINISHED SURFACE CONTOURS (1m): Grey line with '590'
- FILL: Green shaded area
- FILL DEPTH (to nearest 100mm): 'x 0.5'
- STREETLIGHT: Orange star symbol
- STREET TREE: Green circle with star
- DRIVEWAY LOCATION: Brown rectangle
- SUBSTATION (ELECTRICAL): Orange square with 'S'
- BLOCK AREA / BOUNDARY LENGTH: '400m² 4.54'
- 3.5m COMBINED EASEMENT (Sewer and Stormwater): Dashed line
- PATH (1.2 - 2.5m wide): Double line
- BUSHFIRE ATTACK LEVEL: 'BAL 12.5'
- INNER PROTECTION AREA AFFECTED BLOCK (refer note 3): Red circle with 'IPA'
- BLOCK DP NUMBER: '802'
- STORMWATER, SEWER, WATER TIES: Colored lines (green, red, blue)



file name: 306356CS043.dwg  
 layout name: CS043  
 plotted by: Tom Willburger  
 file location: G:\306356\306356\CAD\Superlots Sales Plans plot date: 23/06/2023 8:39 AM Sheet 18 of 28 Sheets

Rev	Description	Approved	Date
G	LEGEND UPDATED	BC	08-04-21
F	HYDRAULIC SERVICES ADDED	BC	06-04-21
E	BLOCK LETTERS REMOVED	BC	18-03-21
D	AREA ON BLOCK B/AYB UPDATED	BC	18-03-21
C	CLIENT COMMENTS ADDRESSED	BC	18-03-21
B	CONTOUR LABELS UPDATED	BC	15-03-21
A	FIRST ISSUE	BC	28-01-21
Rev	Amendments	Approved	Date



**spiire**

Lvl 1, 243 Northbourne Ave Lyneham  
 Australian Capital Territory Australia T 61 2 6102 1000  
 spiire.com.au ABN 55 050 029 635

**Village**

Designed: \_\_\_\_\_ Checked: \_\_\_\_\_  
 Authorised: \_\_\_\_\_ Date: \_\_\_\_\_

**SOUTH JERRABOMBERRA SALES PLAN**  
 STAGE 1D  
 SHEET 43 - SECTION AYA & AYB  
 QPRC  
 VILLAGE BUILDING COMPANY

Dwg No: **306356CS043** Rev: **G**