

LINE	BEARING	DISTANCE
1	346°28'30"	31.765
2	15°23'30"	26.4
3	39°50'30"	30.395
4	38°59'10"	29.36
5	100°37'55"	20.115

HEIGHT DIFFERENCE SCHEDULE			
FROM	TO	HEIGHT DIFFERENCE	METHOD
SSM 208914	SSM 208918	+6.84	DIFFERENTIAL LEVELLING
SSM 208918	SSM 208924	+5.592	DIFFERENTIAL LEVELLING
SSM 208924	SSM 209142	-10.43	DIFFERENTIAL LEVELLING
SSM 209142	SSM 209143	-4.688	DIFFERENTIAL LEVELLING
SSM 209143	SSM 208912	-5.426	DIFFERENTIAL LEVELLING
SSM 208912	SSM 208913	+3.772	DIFFERENTIAL LEVELLING
SSM 208913	SSM 208914	+4.34	DIFFERENTIAL LEVELLING

HEIGHT DATUM: AHD71

HEIGHT SCHEDULE					
MARK	AHD VALUE	CLASS	PU	HEIGHT DATUM CONFIRMATION	STATE
PM 76535	669.98	C	0-03	SCIMS ADOPTED	FOUND
SSM 208914	659.338	U	N/A	DIFFERENTIAL LEVELLING	FOUND
SSM 208918	666.178	U	N/A	DIFFERENTIAL LEVELLING	FOUND
SSM 208824	671.770	LC	N/A	DIFFERENTIAL LEVELLING	PLACED
SSM 209142	661.340	LC	N/A	DIFFERENTIAL LEVELLING	PLACED
SSM 209143	656.652	LC	N/A	DIFFERENTIAL LEVELLING	PLACED
SSM 208912	651.226	U	N/A	DIFFERENTIAL LEVELLING	FOUND
SSM 208913	654.998	U	N/A	DIFFERENTIAL LEVELLING	FOUND

DATE OF SCIMS AHD VALUES: 14/04/2025 HEIGHT DATUM: AHD71

COORDINATE SCHEDULE						
MARK	MGA COORDINATES		CLASS	PU	METHOD	STATE
	EASTING	NORTHING				
Y TS 3696	696 536.151	6 078 516.989	A	0-02	SCIMS	FOUND
TS 10833	695 246.149	6 082 122.81	A	0-02	SCIMS	FOUND
X PM 76535	695 955.926	6 079 472.67	C	0-03	SCIMS	FOUND
SS 208900	696 637.659	6 079 703.862	D	0-07	SCIMS	FOUND
SS 208912	696 322.545	6 079 833.085	D	0-08	SCIMS	FOUND
SS 208913	696 380.526	6 079 777.38	D	0-06	SCIMS	FOUND
SS 208914	696 474.876	6 079 698.255	D	0-07	SCIMS	FOUND
SS 208918	696 535.647	6 079 647.465	D	0-06	SCIMS	FOUND
SS 208924	696 443.413	6 079 589.410	D	N/A	CADASTRAL TRAVERSE	PLACED
SS 209142	696 383.313	6 079 686.714	D	N/A	CADASTRAL TRAVERSE	PLACED
SS 209143	696 320.333	6 079 737.763	D	N/A	CADASTRAL TRAVERSE	PLACED

DATE OF SCIMS COORDINATES: 14/04/2025 MGA ZONE 55 MGA DATUM: GDA2020
COMBINED SCALE FACTOR 0.99997

RAIL CORPORATION NEW SOUTH WALES
 APPROVAL: 22 JULY 2015
 REFERENCE: QUEANBEYAN 220715

EASEMENT FOR NOISE, VIBRATION & ELECTROLYSIS (TRAIN) VIDE DP 1269436 AFFECTING WHOLE OF LOTS 204-217
 SEE SHEET 4 DIAGRAM 3 FOR SEWER EASEMENT DIMENSIONS
 SEE SHEET 4 DIAGRAM 4 FOR WATER SUPPLY EASEMENT DIMENSIONS
 SEE SHEET 6 FOR DRAINAGE EASEMENT DIMENSIONS

(W) POSITIVE COVENANT (TEMPORARY ASSET PROTECTION ZONE)
 (X) LAND EXCLUDES (S-171 CROWN LANDS ACT (1989))
 (Y) LAND EXCLUDES MINERALS AND IS SUBJECT TO RESERVATIONS AND CONDITIONS - SEE CRWON GRANT(S)
 (YY) BENEFITED BY
 EASEMENT FOR ELECTRICITY PURPOSES 20 WIDE (DP1001136)
 EASEMENT FOR WATER SUPPLY (OVER EXISTING LINE OF PIPES)(DP1001136)

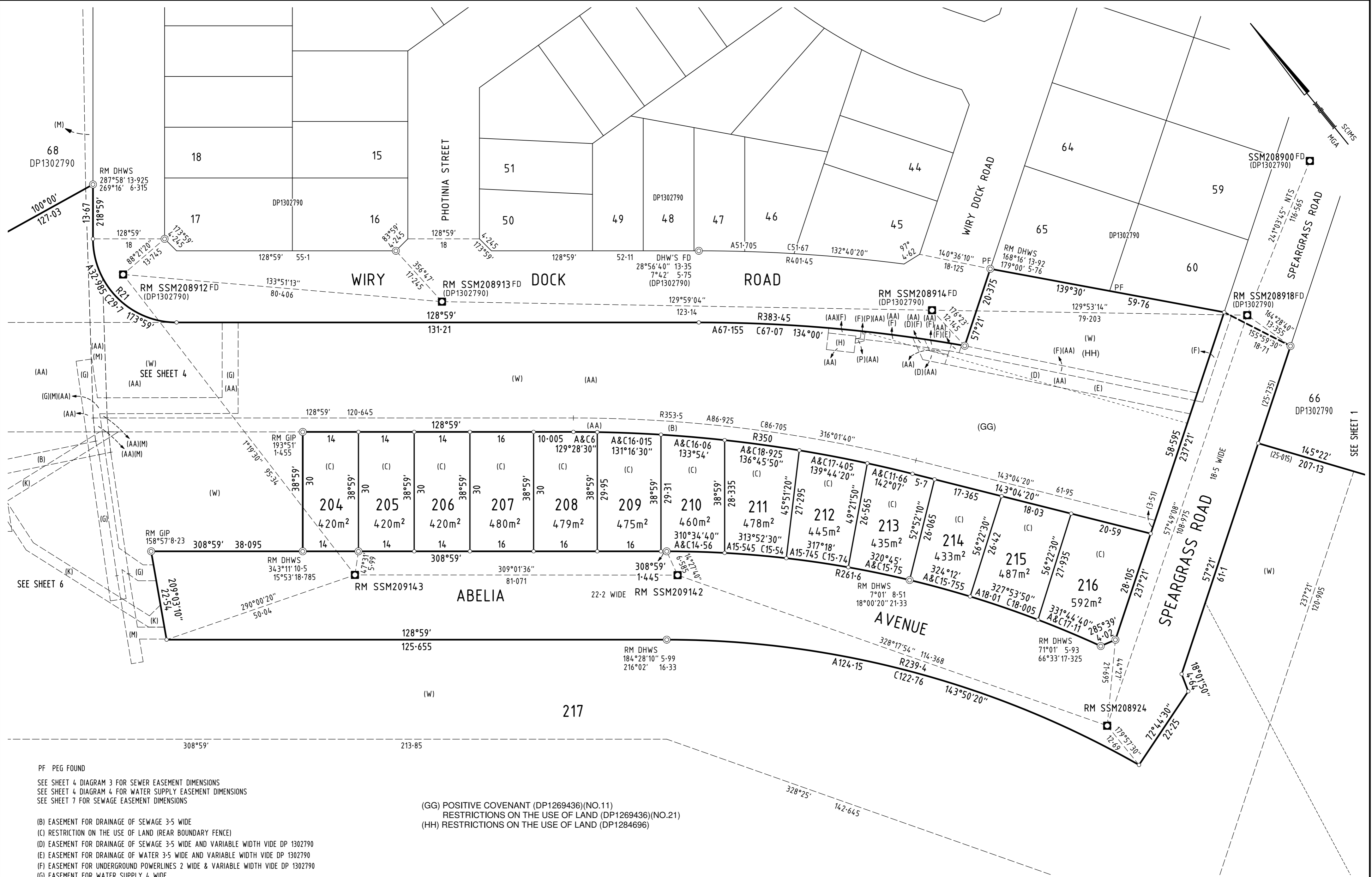
SURVEYOR
 Name: Stuart Murray Mason
 Date: 16/04/2025
 Reference: 322025SV00 2C1 20M
 (PARTIAL)

PLAN OF SUBDIVISION OF LOT 67 IN DP 1302790 & EASEMENT PLAN OVER LOT 68 DP 1302790

L.G.A.: QUEANBEYAN-PALERANG REGIONAL
 Locality: TRALEE
 Reduction Ratio: 1:4000
 Lengths are in metres.

REGISTERED
 06/06/2025


DP1315891

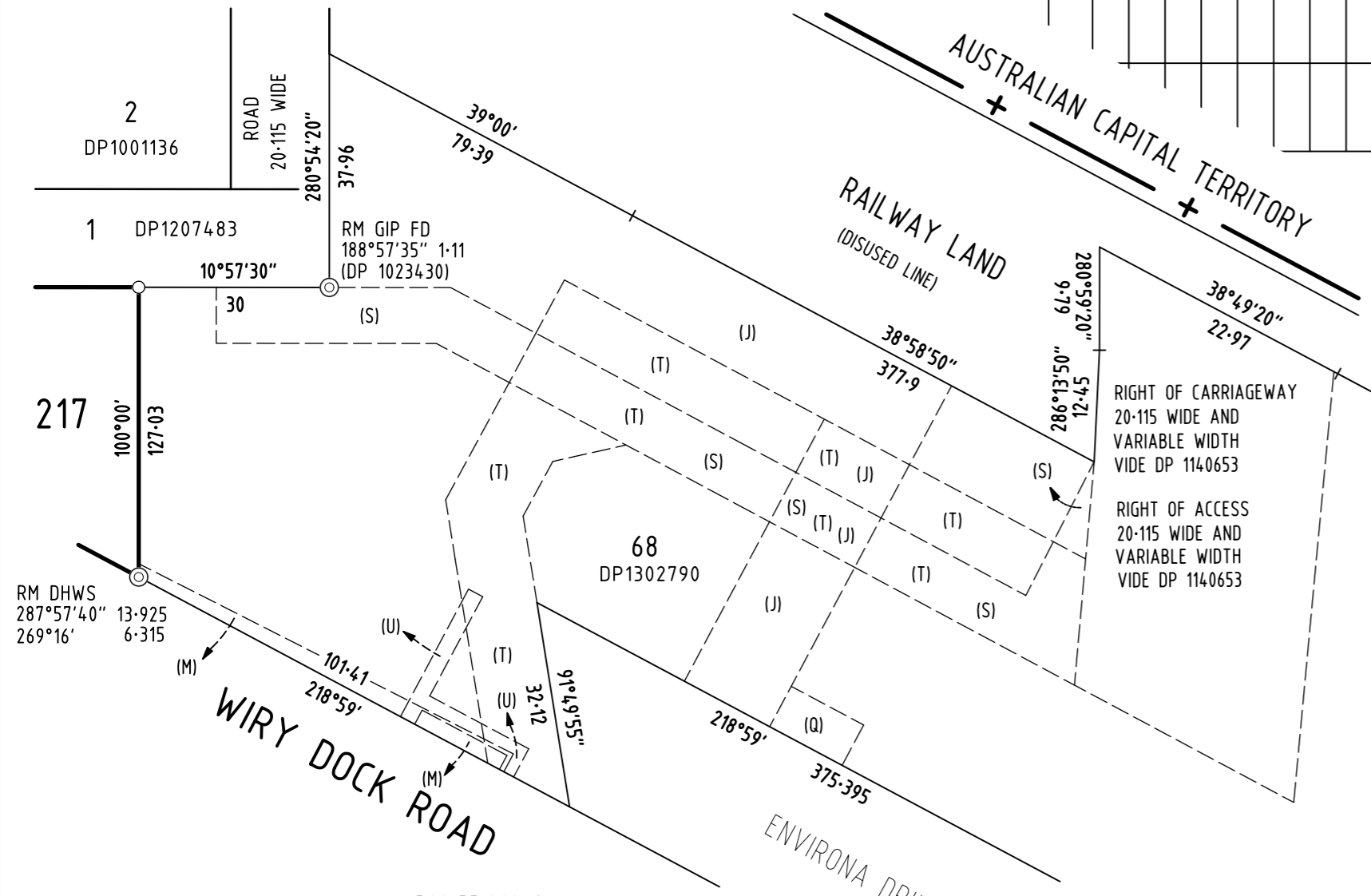
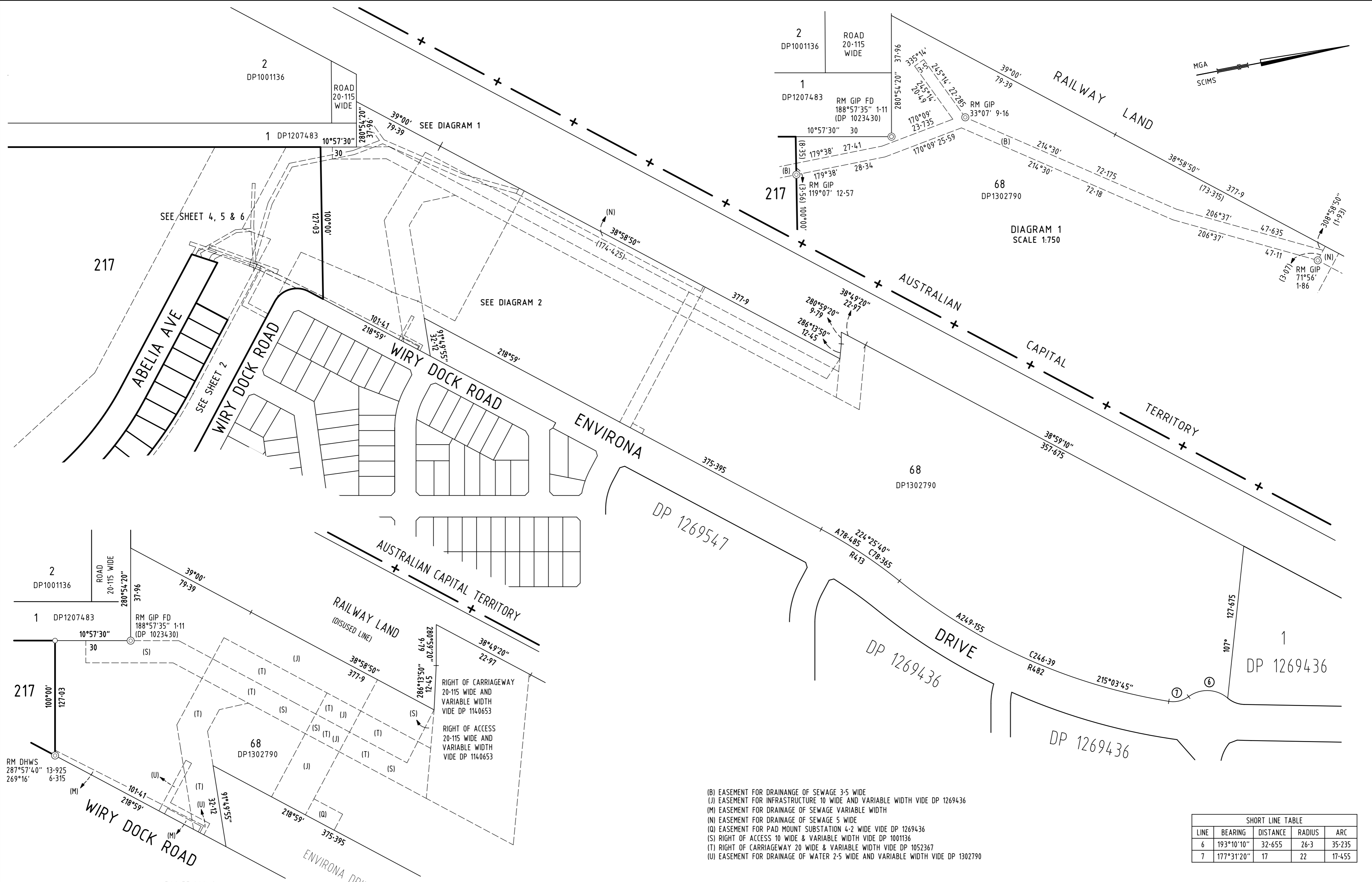


PF PEG FOUND
 SEE SHEET 4 DIAGRAM 3 FOR SEWER EASEMENT DIMENSIONS
 SEE SHEET 4 DIAGRAM 4 FOR WATER SUPPLY EASEMENT DIMENSIONS
 SEE SHEET 7 FOR SEWAGE EASEMENT DIMENSIONS

- (B) EASEMENT FOR DRAINAGE OF SEWAGE 3-5 WIDE
- (C) RESTRICTION ON THE USE OF LAND (REAR BOUNDARY FENCE)
- (D) EASEMENT FOR DRAINAGE OF SEWAGE 3-5 WIDE AND VARIABLE WIDTH VIDE DP 1302790
- (E) EASEMENT FOR DRAINAGE OF WATER 3-5 WIDE AND VARIABLE WIDTH VIDE DP 1302790
- (F) EASEMENT FOR UNDERGROUND POWERLINES 2 WIDE & VARIABLE WIDTH VIDE DP 1302790
- (G) EASEMENT FOR WATER SUPPLY 4 WIDE
- (H) EASEMENT FOR MULTI-PURPOSE ELECTRICAL INSTALLATION 4-2 WIDE VIDE DP 1302790
- (K) EASEMENT FOR DRAINAGE OF WATER VARIABLE WIDTH (NO.4)
- (M) EASEMENT FOR DRAINAGE OF SEWAGE VARIABLE WIDTH
- (P) EASEMENT FOR UNDERGROUND POWERLINES 1 WIDE VIDE DP 1302790
- (W) POSITIVE COVENANT (TEMPORARY ASSET PROTECTION ZONE)(NO.5)
- (AA) EASEMENT FOR DRAINAGE OF WATER VARIABLE WIDTH

(GG) POSITIVE COVENANT (DP1269436)(NO.11)
 RESTRICTIONS ON THE USE OF LAND (DP1269436)(NO.21)
 (HH) RESTRICTIONS ON THE USE OF LAND (DP1284696)

<p>SURVEYOR Name: Stuart Murray Mason Date: 16/04/2025 Reference: 322025SV00 2C1 20M (PARTIAL)</p>	<p>PLAN OF SUBDIVISION OF LOT 67 IN DP 1302790 & EASEMENT PLAN OVER LOT 68 DP 1302790</p>	<p>L.G.A.: QUEANBEYAN-PALERANG REGIONAL Locality: TRALEE Reduction Ratio: 1:600 Lengths are in metres.</p>	<p>REGISTERED  06/06/2025</p>	<p>DP1315891</p>
---	--	---	---	-------------------------



- (B) EASEMENT FOR DRAINAGE OF SEWAGE 3.5 WIDE
- (J) EASEMENT FOR INFRASTRUCTURE 10 WIDE AND VARIABLE WIDTH VIDE DP 1269436
- (M) EASEMENT FOR DRAINAGE OF SEWAGE VARIABLE WIDTH
- (N) EASEMENT FOR DRAINAGE OF SEWAGE 5 WIDE
- (Q) EASEMENT FOR PAD MOUNT SUBSTATION 4.2 WIDE VIDE DP 1269436
- (S) RIGHT OF ACCESS 10 WIDE & VARIABLE WIDTH VIDE DP 1001136
- (T) RIGHT OF CARRIAGEWAY 20 WIDE & VARIABLE WIDTH VIDE DP 1052367
- (U) EASEMENT FOR DRAINAGE OF WATER 2.5 WIDE AND VARIABLE WIDTH VIDE DP 1302790

SHORT LINE TABLE				
LINE	BEARING	DISTANCE	RADIUS	ARC
6	193°10'10"	32.655	26.3	35.235
7	177°31'20"	17	22	17.455

DIAGRAM 2 NOT TO SCALE

SURVEYOR
 Name: Stuart Murray Mason
 Date: 16/04/2025
 Reference: 322025SV00 2C1 20M
 (PARTIAL)

PLAN OF SUBDIVISION OF LOT 67 IN DP 1302790 & EASEMENT PLAN OVER LOT 68 DP 1302790

L.G.A.: QUEANBEYAN-PALERANG REGIONAL
 Locality: TRALEE
 Reduction Ratio: 1:2000
 Lengths are in metres.

REGISTERED
 06/06/2025

DP1315891

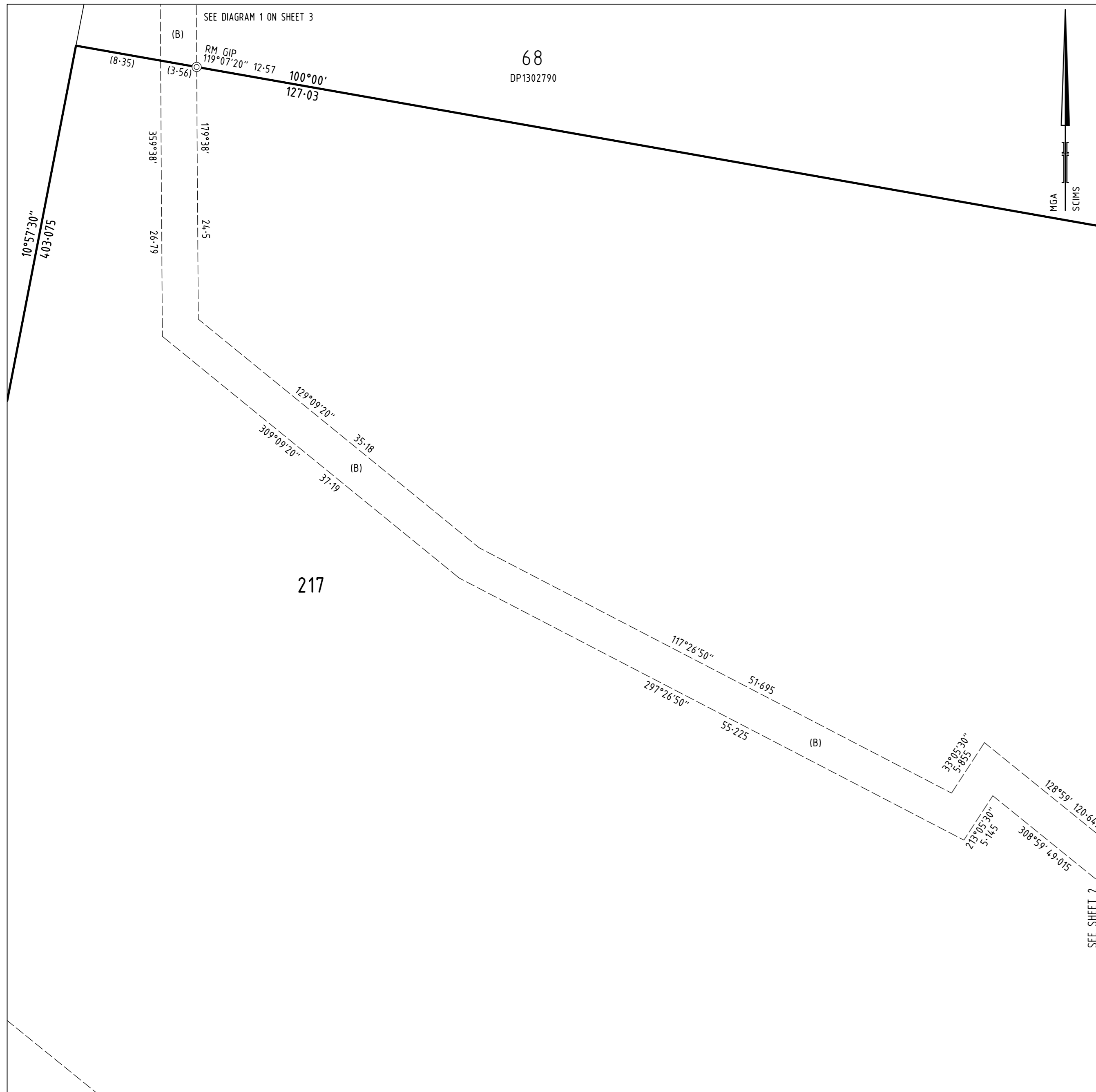


DIAGRAM 3

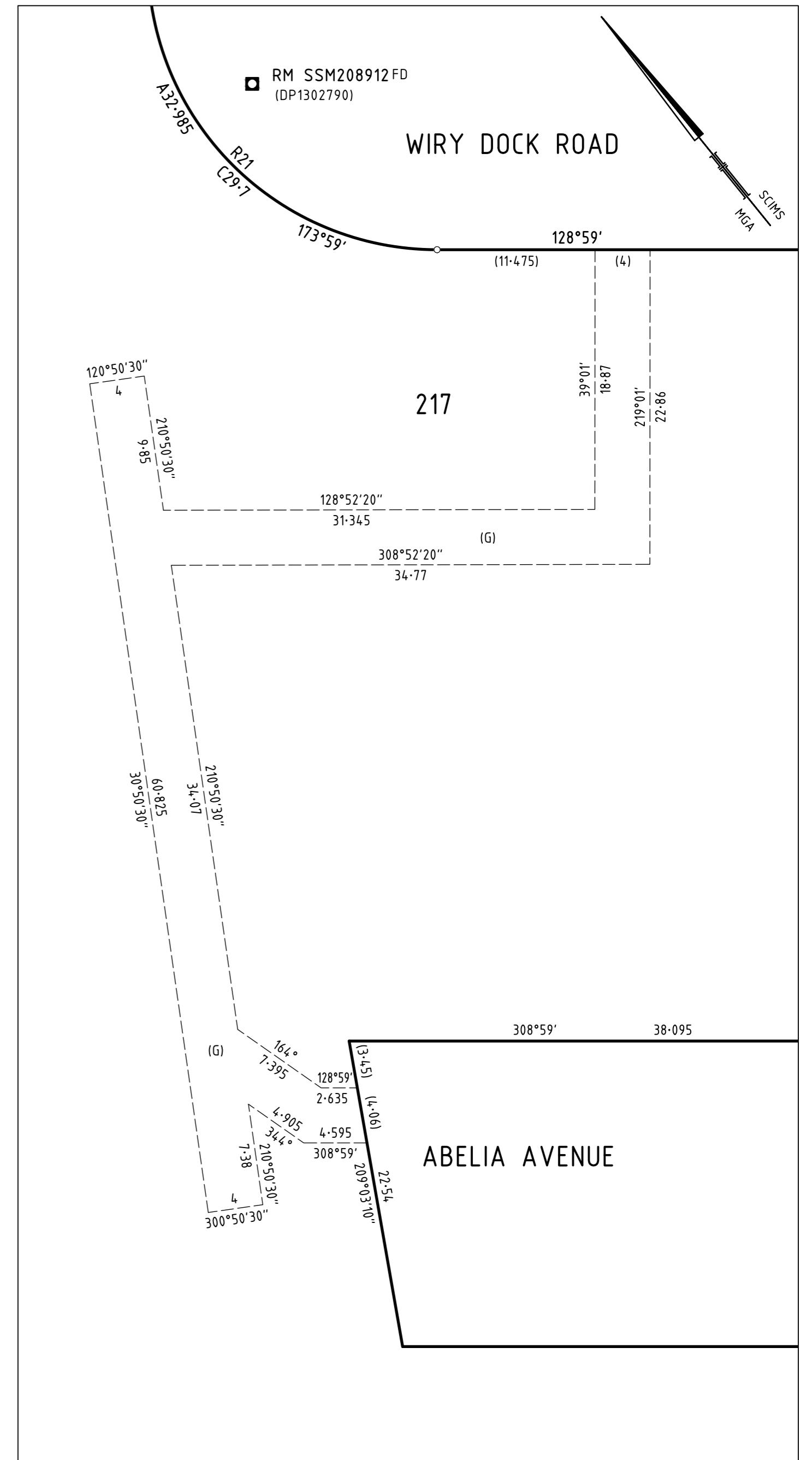


DIAGRAM 4

(B) EASEMENT FOR DRAINAGE OF SEWAGE 3.5 WIDE
(G) EASEMENT FOR WATER SUPPLY 4 WIDE

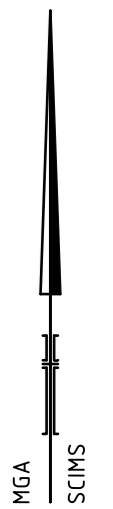
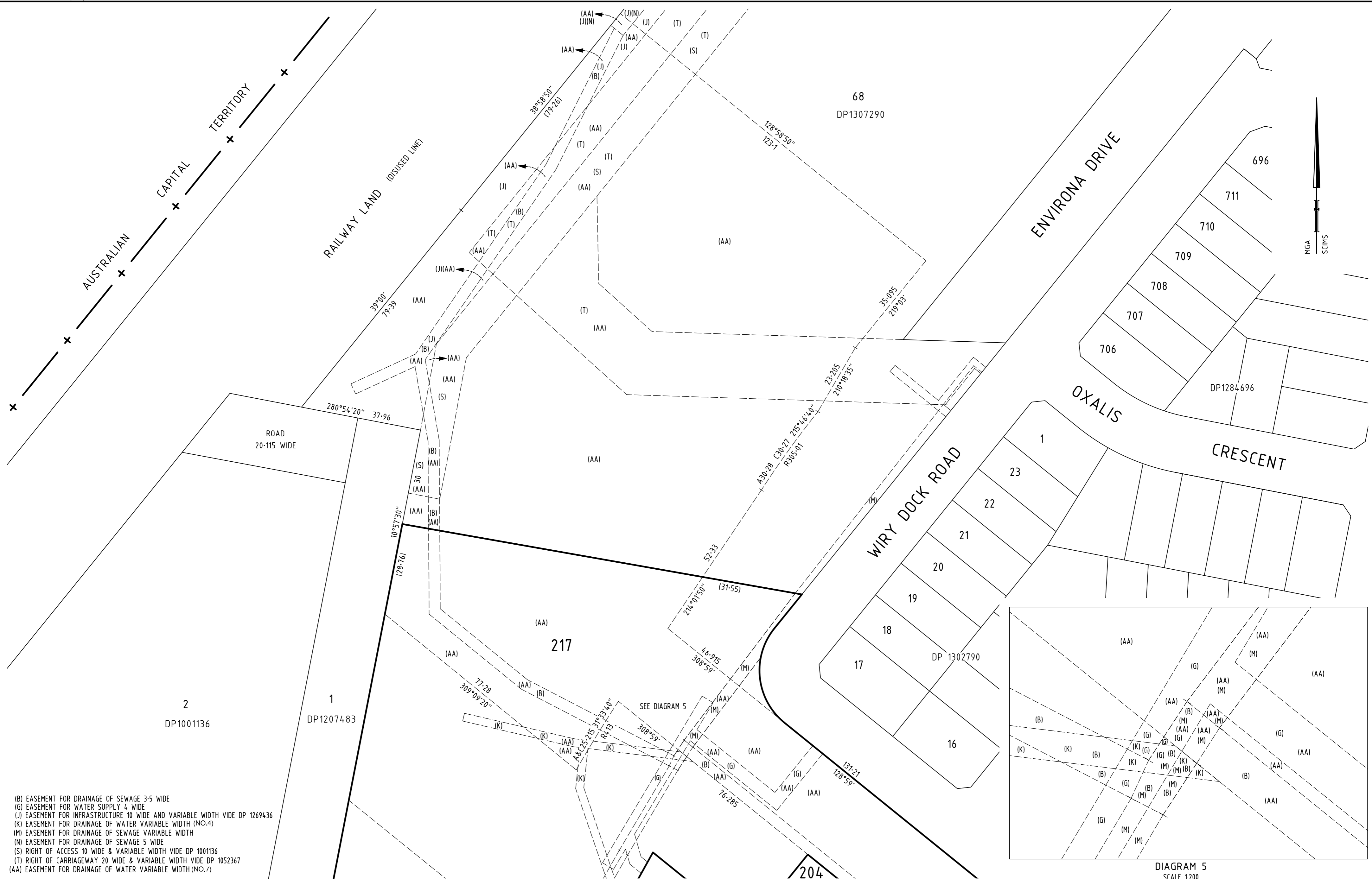
SURVEYOR
Name: Stuart Murray Mason
Date: 16/04/2025
Reference: 322025SV00 2C1 20M
(PARTIAL)

PLAN OF SUBDIVISION OF LOT 67 IN DP 1302790 & EASEMENT PLAN OVER LOT 68 DP 1302790

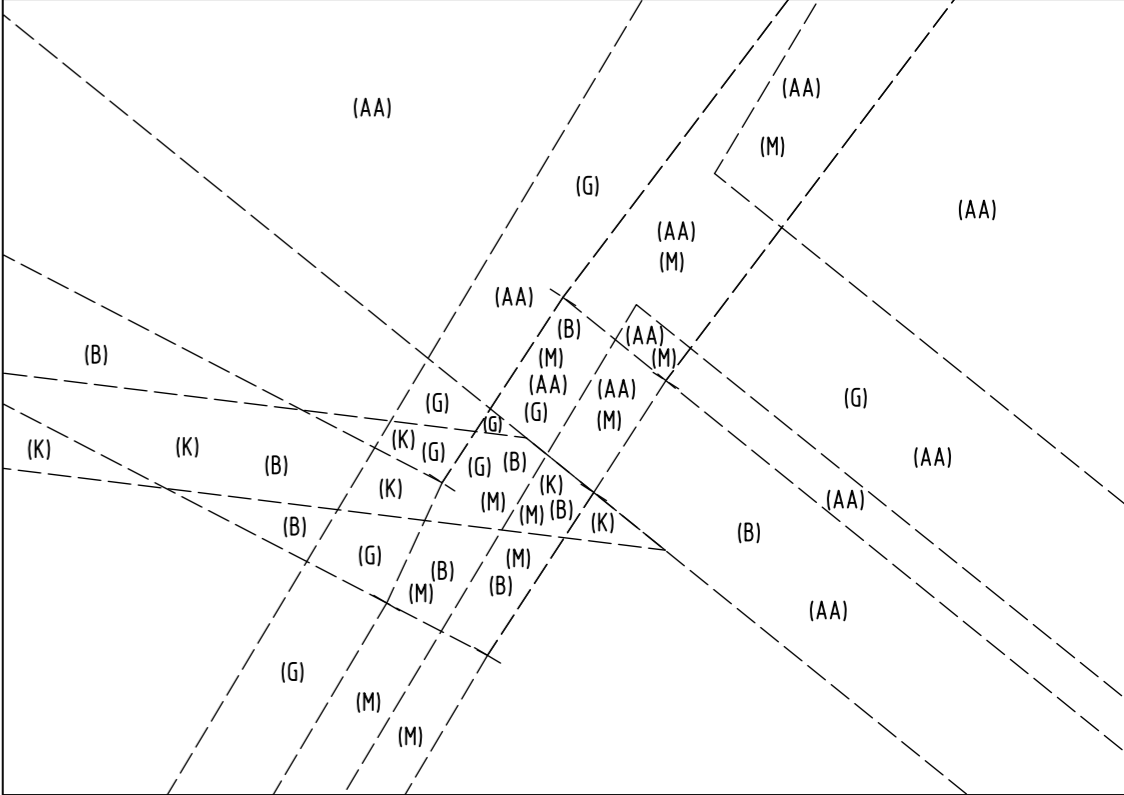
L.G.A.: QUEANBEYAN-PALERANG REGIONAL
Locality: TRALEE
Reduction Ratio: 1:300
Lengths are in metres.

REGISTERED
06/06/2025

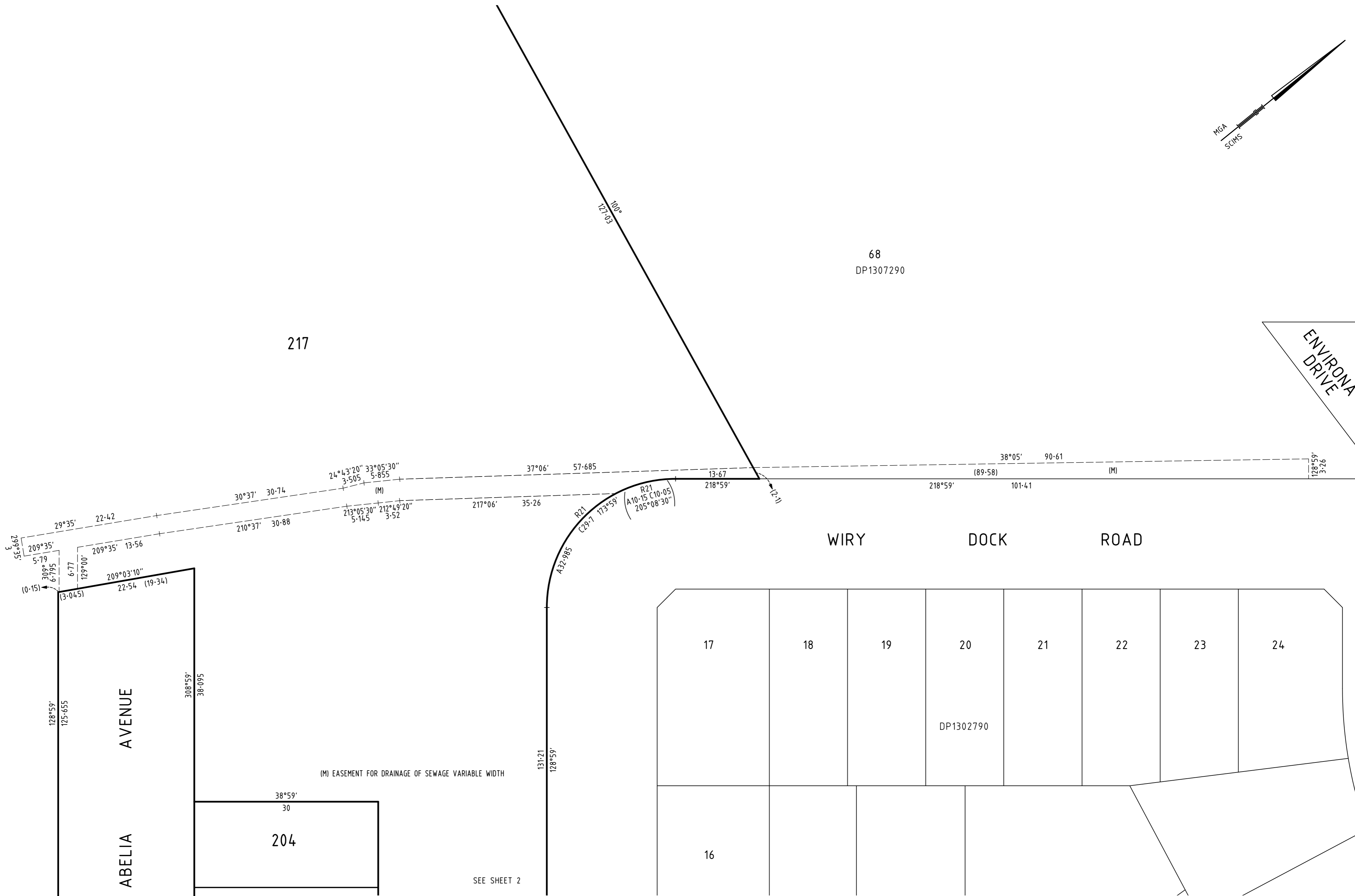
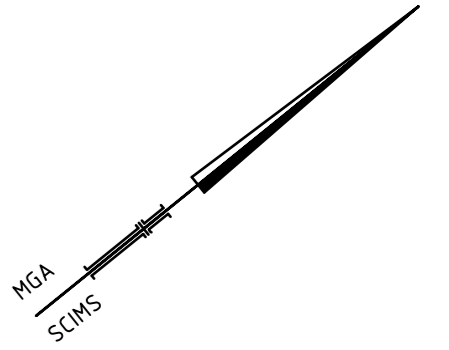
DP1315891



(B) EASEMENT FOR DRAINAGE OF SEWAGE 3.5 WIDE
 (G) EASEMENT FOR WATER SUPPLY 4 WIDE
 (J) EASEMENT FOR INFRASTRUCTURE 10 WIDE AND VARIABLE WIDTH VIDE DP 1269436
 (K) EASEMENT FOR DRAINAGE OF WATER VARIABLE WIDTH (NO.4)
 (M) EASEMENT FOR DRAINAGE OF SEWAGE VARIABLE WIDTH
 (N) EASEMENT FOR DRAINAGE OF SEWAGE 5 WIDE
 (S) RIGHT OF ACCESS 10 WIDE & VARIABLE WIDTH VIDE DP 1001136
 (T) RIGHT OF CARRIAGEWAY 20 WIDE & VARIABLE WIDTH VIDE DP 1052367
 (AA) EASEMENT FOR DRAINAGE OF WATER VARIABLE WIDTH (NO.7)



<p>SURVEYOR Name: Stuart Murray Mason Date: 16/04/2025 Reference: 322025SV00 2C1 20M (PARTIAL)</p>	<p>PLAN OF SUBDIVISION OF LOT 67 IN DP 1302790 & EASEMENT PLAN OVER LOT 68 DP 1302790</p>	<p>L.G.A.: QUEANBEYAN-PALERANG REGIONAL Locality: TRALEE Reduction Ratio: 1:750 Lengths are in metres.</p>	<p>REGISTERED  06/06/2025</p>	<p>DP1315891</p>
---	--	---	---	-------------------------



0 10 20 30 40 50 60 70 80 90 100 110 120 130 140 150

SURVEYOR
 Name: Stuart Murray Mason
 Date: 16/04/2025
 Reference: 322025SV00 2C1 20M
 (PARTIAL)

PLAN OF SUBDIVISION OF LOT
 67 IN DP 1302790 & EASEMENT
 PLAN OVER LOT 68 DP 1302790

L.G.A.: QUEANBEYAN-PALERANG REGIONAL
 Locality: TRALEE
 Reduction Ratio: 1:400
 Lengths are in metres.

REGISTERED
 06/06/2025

DP1315891